

REPORT TO PARISH COUNCILLORS
SPEED WARNING DEVICE DATA SEPTEMBER 2022

INTRODUCTION

This Report covers the period 1st June 2022 to 31st August 2022 and refers in parts to the Report of May 2022 which provided an analysis of information gathered during the first month following installation.

In addition to the analysis of monthly data and following concerns raised by parishioners, this report also considers outgoing traffic speeds during the period 6am to 9am at the Eastern end of the village.

ORCHARD CLOSE

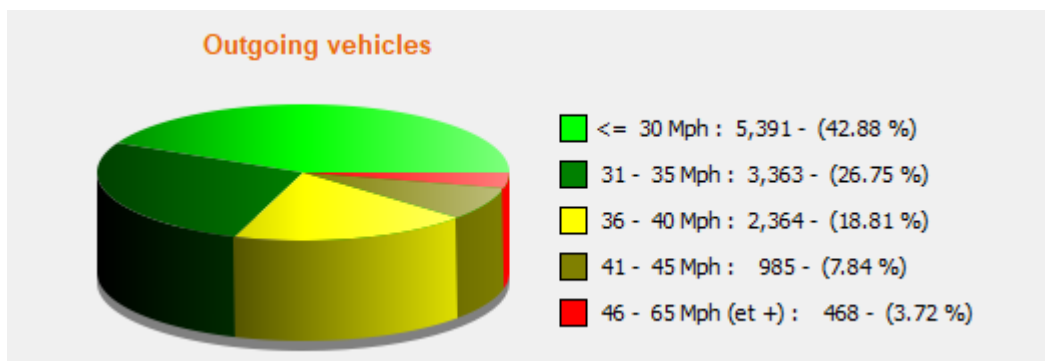
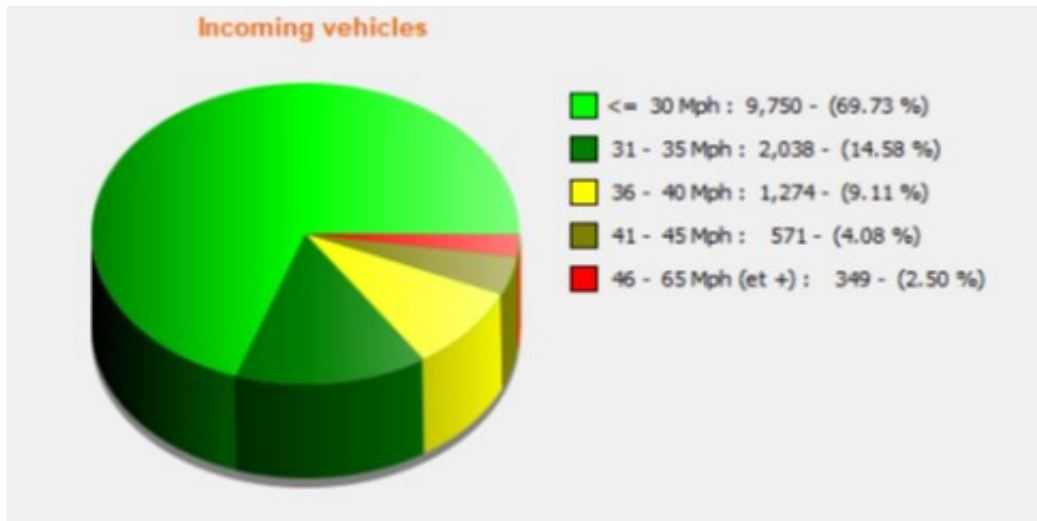
The proportion of vehicles travelling within the speed limit on entry to the village has declined slightly from the May baseline from 69.9% in May and June to 64.79% in July and 66.24% in August. One third of the traffic entering our Village along Low Road is therefore exceeding the speed limit. Concerningly, 920 vehicles in June, 1.163 vehicles in July and 953 in August entered the 30mph zone at speeds in excess of 40mph. The fastest recorded speed occurred on 8th July at 22.30pm. It is important to note, however that high speed is not limited to the night time hours, with many instances of 60mph+ speeds occurring between 7.30am and 7.30pm.

It is the speed of outgoing traffic that continues to cause the most concern. The proportion of outward bound traffic travelling within the speed limit declined from 41.22% in May to 38.4% in July, before returning to 41.3% in August. In June, 1453 vehicles were travelling in excess of 40mph. This number was 1692 in July and 1553 in August. The highest recorded speed occurred on 21st August 2022 at 8pm and was a very worrying 83mph. Again, speeds in excess of 60mph occur throughout the day.

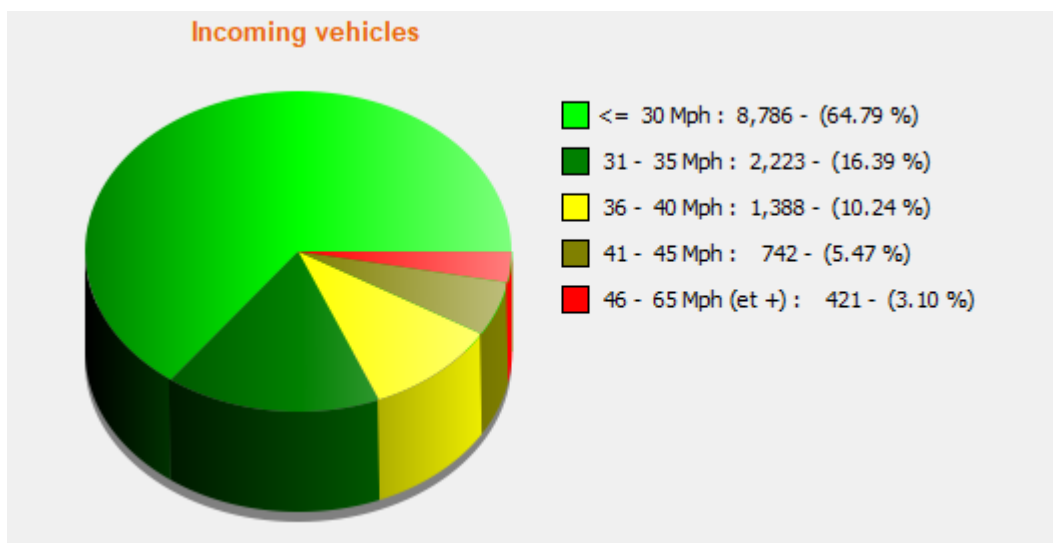
In response to a request from a parishioner at the Parish Council Meeting held in July, I have had a close look at the data for a two- hour period from 7.00am to 9.00am. There is no noticeable difference in the proportion of vehicles exceeding the speed limit at this time when compared to the next two-hour period. However, I will continue to monitor this.

ORCHARD CLOSE CHARTS

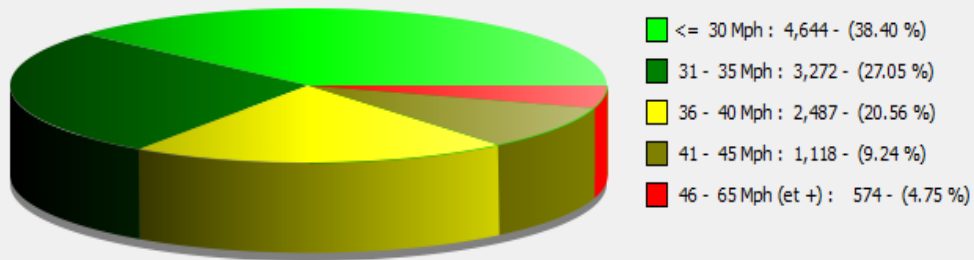
JUNE 2022



JULY 2022

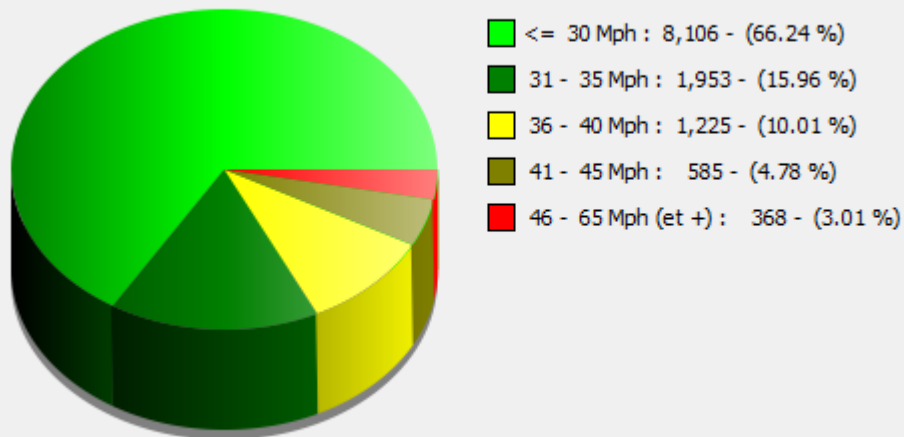


Outgoing vehicles

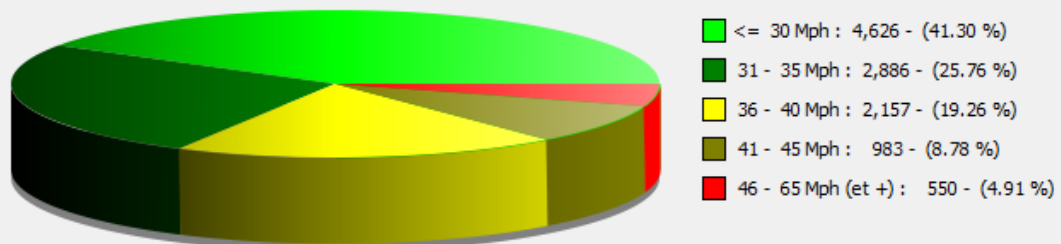


AUGUST 2022

Incoming vehicles



Outgoing vehicles



NUMBER OF VEHICLES TRAVELLING AT HIGHER SPEEDS

INCOMING TRAFFIC

| | 46mph+ | 55mph+ | 60mph+ | 70mpht+ | 80mph+ | Highest speed |
|--------|--------|--------|--------|---------|--------|---------------|
| June | 571 | 39 | 16 | 0 | 0 | 68mph |
| July | 349 | 41 | 12 | 2 | 0 | 79mph |
| August | 368 | 29 | 9 | 0 | 0 | 63mph |

OUTGOING TRAFFIC

| | 46mph+ | 55mph+ | 60mph+ | 70mpht+ | 80mph+ | Highest speed |
|--------|--------|--------|--------|---------|--------|---------------|
| June | 468 | 43 | 19 | 1 | 0 | 78mph |
| July | 598 | 55 | 21 | 4 | 0 | 74mph |
| August | 550 | 56 | 16 | 1 | 1 | 83mph |

WAR MEMORIAL

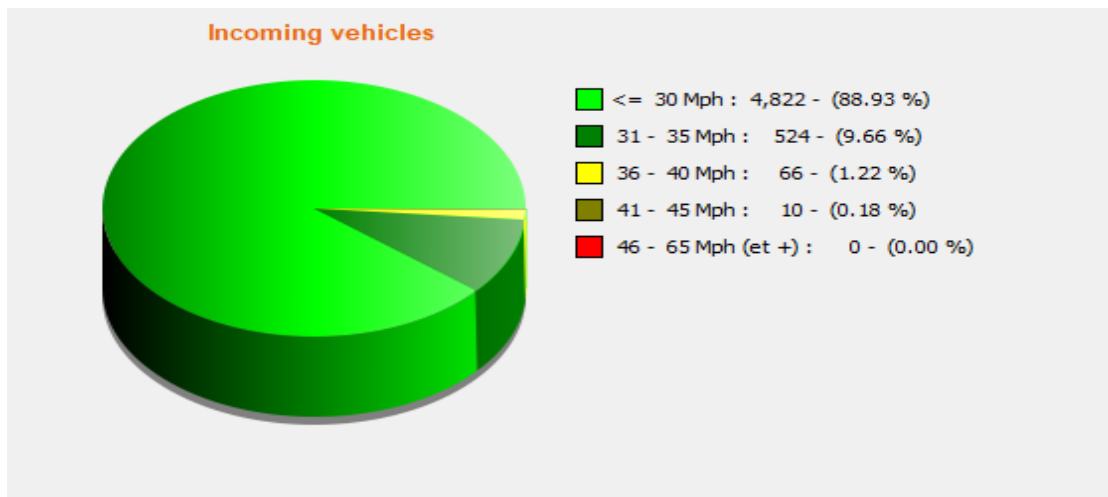
The proportion of vehicles travelling within the speed limit on entry to the village has remained stable when compared to the baseline data of May 2022. Currently 89% of vehicles are within the speed limit. In the three month period June to August 2022, 17 vehicles were travelling at speeds in excess of 40mph as they entered the village and the highest speed recorded was 47mph.

Similarly, there has been little change to the data in relation to outgoing traffic, with 86 to 87% of traffic travelling towards the National speed limit zone within the 30mph speed limit. There were 15 vehicles during the 3 month period June to August 2022 travelling above 40mph through the village and the highest speed recorded was 55mph.

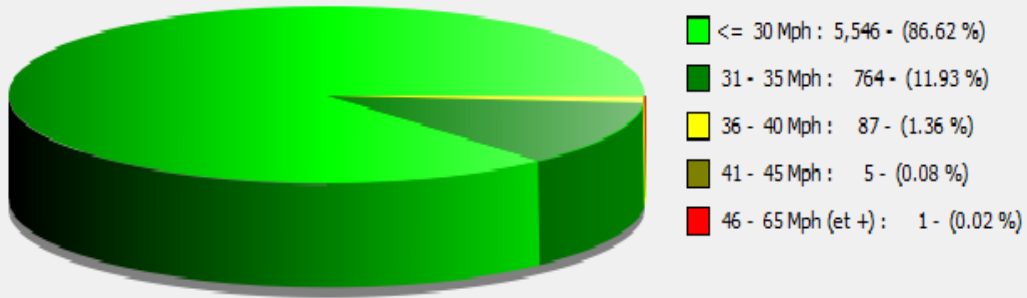
The data indicates that speeding in the village is much less of an issue in the West than it is in the East of the village. However, whilst only 11% of vehicles leaving to the West are travelling at speeds in excess of the 30mph limit, this still equates to around 1,500 vehicles per month. We must not lose sight of the fact that any vehicle travelling above the speed limit takes longer to stop in an emergency and has the capacity to seriously injure or kill, particularly at speeds in excess of 40mph.

WAR MEMORIAL CHARTS

JUNE 2022

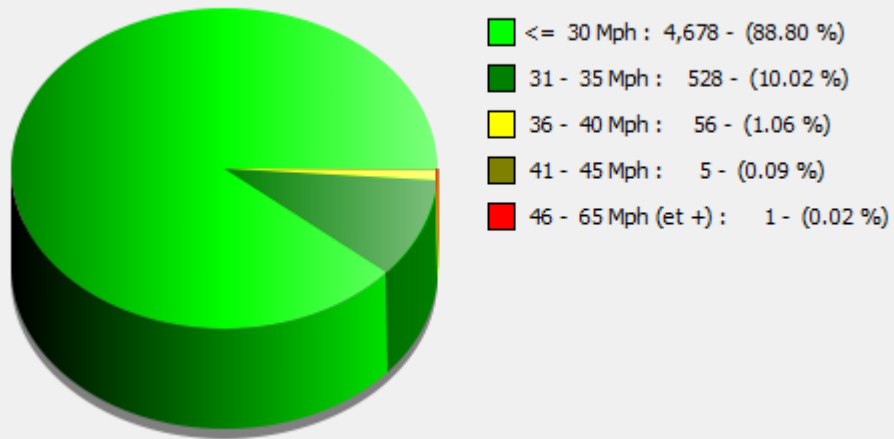


Outgoing vehicles

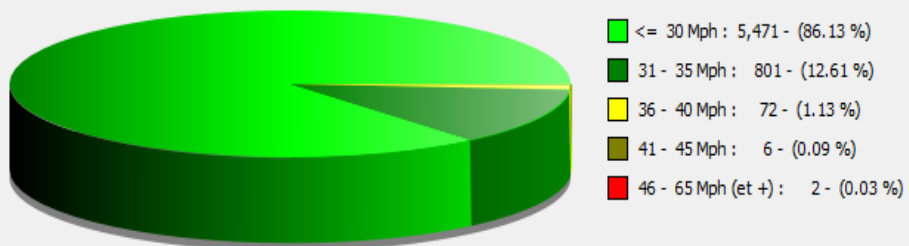


JULY 2022

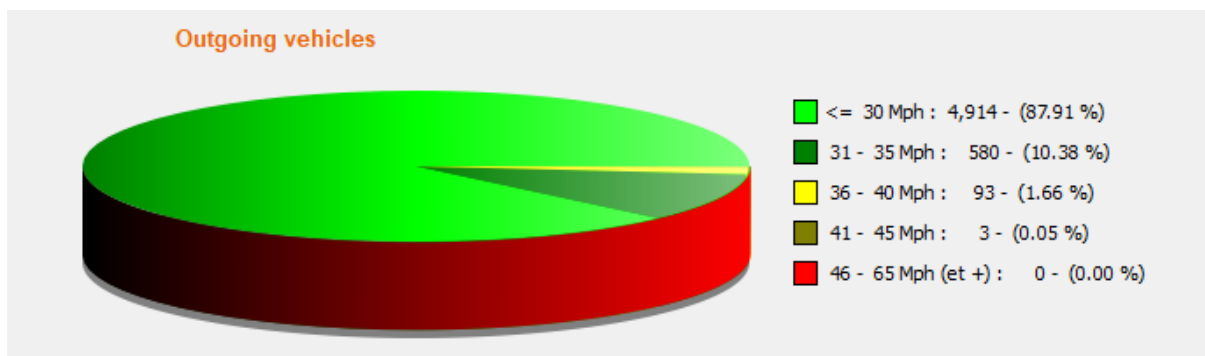
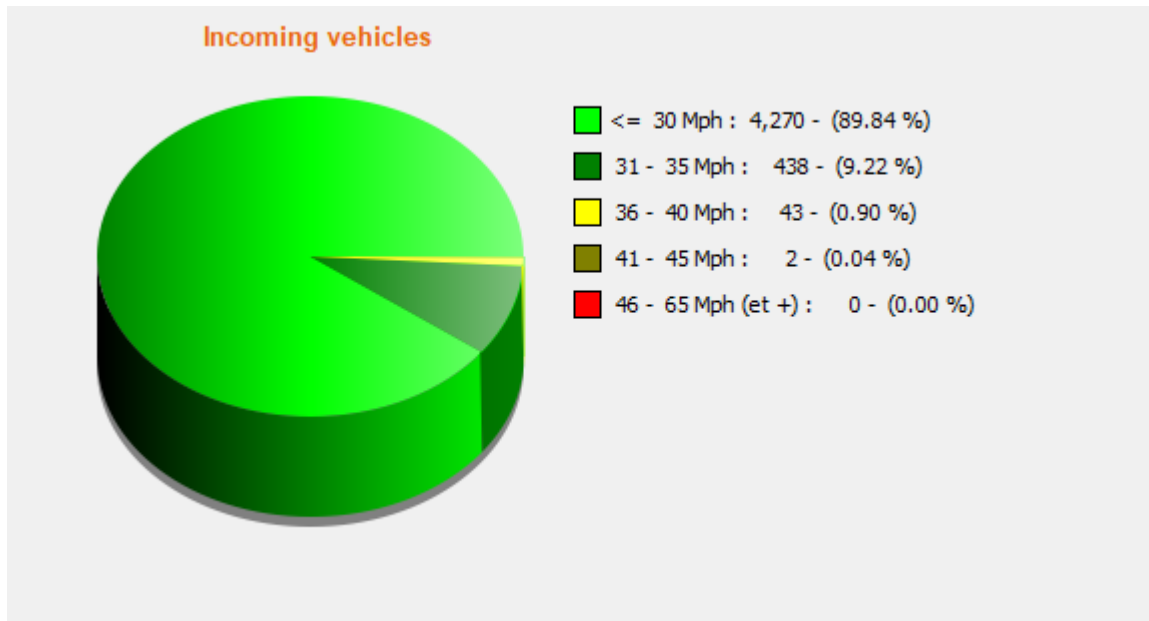
Incoming vehicles



Outgoing vehicles



AUGUST 2022



NUMBER OF VEHICLES TRAVELLING AT HIGHER SPEEDS

INCOMING TRAFFIC

| | 46mph+ | 55mph+ | 60mph+ | 70mpht+ | 80mph+ | Highest speed |
|--------|--------|--------|--------|---------|--------|---------------|
| June | 0 | 0 | 0 | 0 | 0 | 43mph |
| July | 1 | 0 | 0 | 0 | 0 | 47mph |
| August | 0 | 0 | 0 | 0 | 0 | 42mph |

OUTGOING TRAFFIC

| | 46mph+ | 55mph+ | 60mph+ | 70mpht+ | 80mph+ | Highest speed |
|--------|--------|--------|--------|---------|--------|---------------|
| June | 1 | 1 | 0 | 0 | 0 | 55mph |
| July | 2 | 0 | 0 | 0 | 0 | 49mph |
| August | 0 | 0 | 0 | 0 | 0 | 42mph |